

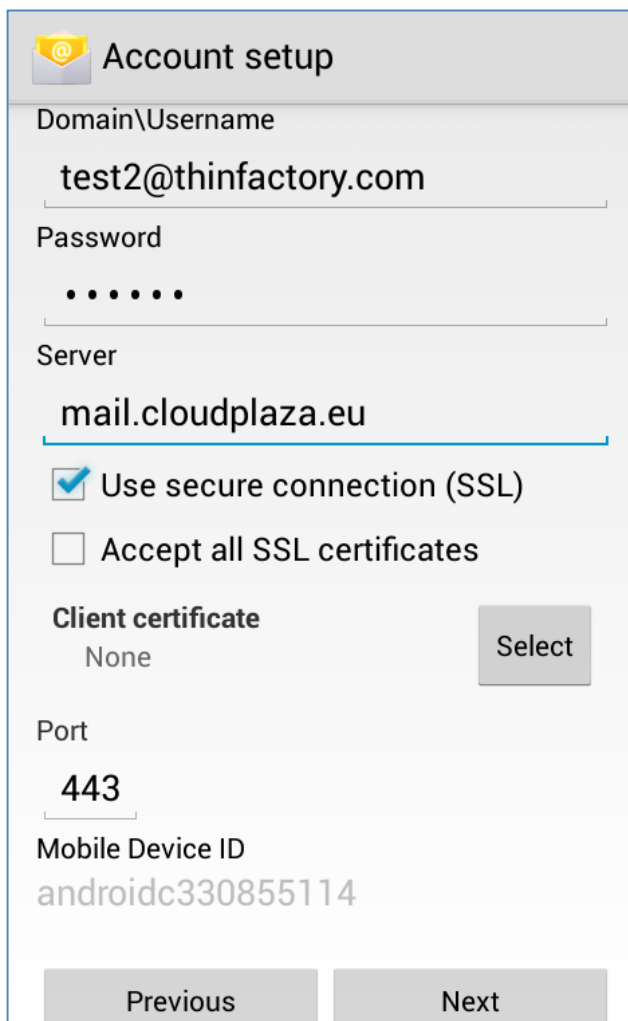
How to configure an Exchange mailbox on mobile device **Android & iPhone**

Author	Benny Vandersmissen
Approval	
Document	
Version	1
Date	
Distribution	

1. Android Device:

Note: some naming may vary depending on what smartphone you have and what Android OS version you are using.

- On your Android smartphone, go to settings – in the Accounts section choose “Add account” – E-mail
- Type your full email address, for example tony@contoso.com, type your password, and then tap “Next”.
- Choose “Exchange”
- Fill in Domain\username :
Fill in the Exchange server: mail.cloudplaza.eu
Make sure the “Use secure connections (SSL)” box is checked and tap “Next”

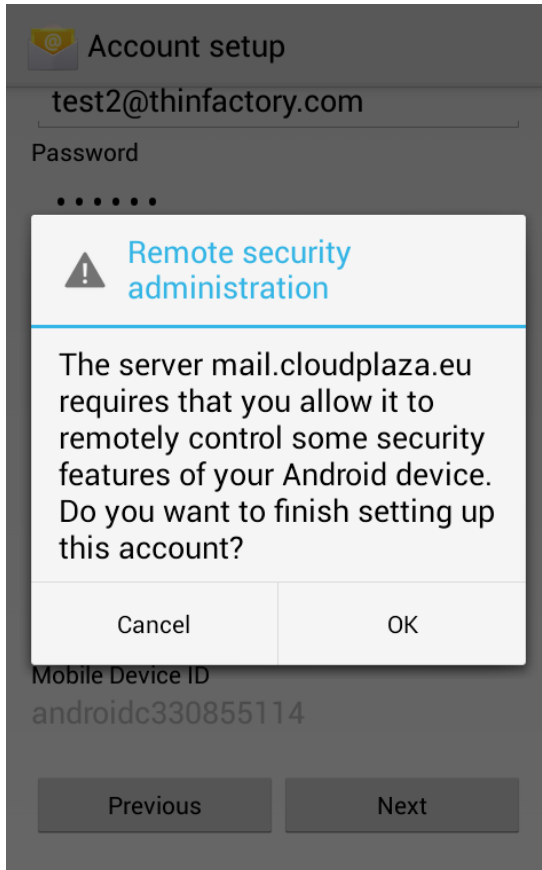


The screenshot shows the 'Account setup' screen for an Exchange account. The fields are filled with the following information:

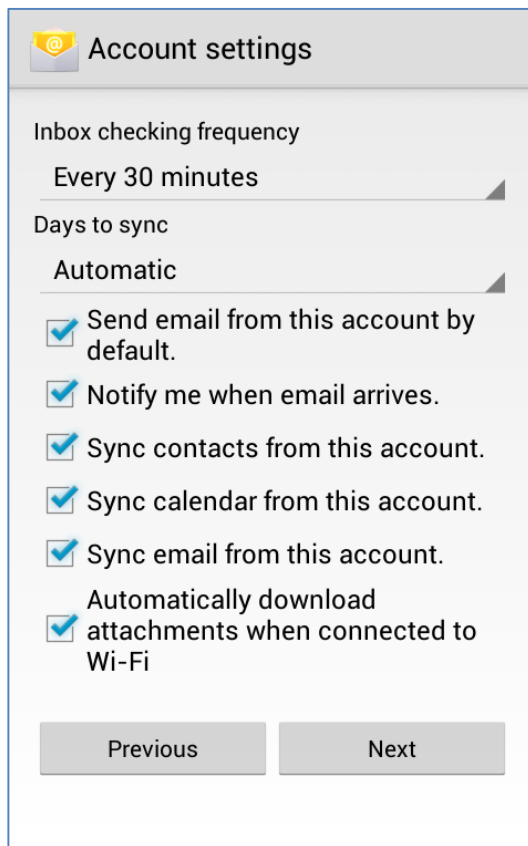
- Domain\Username:** test2@thinfactory.com
- Password:** (masked with dots)
- Server:** mail.cloudplaza.eu
- Use secure connection (SSL):**
- Accept all SSL certificates:**
- Client certificate:** None (with a 'Select' button)
- Port:** 443
- Mobile Device ID:** androidc330855114

At the bottom, there are 'Previous' and 'Next' navigation buttons.

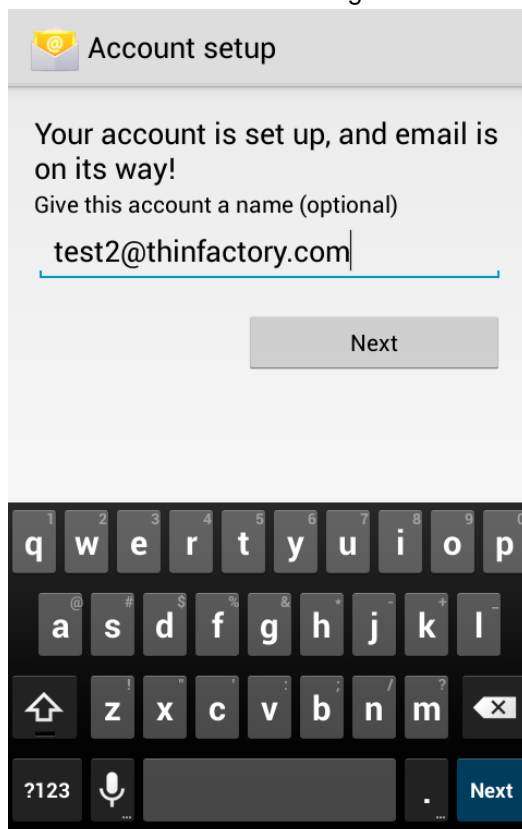
- Click **OK** to allow for enhanced security.



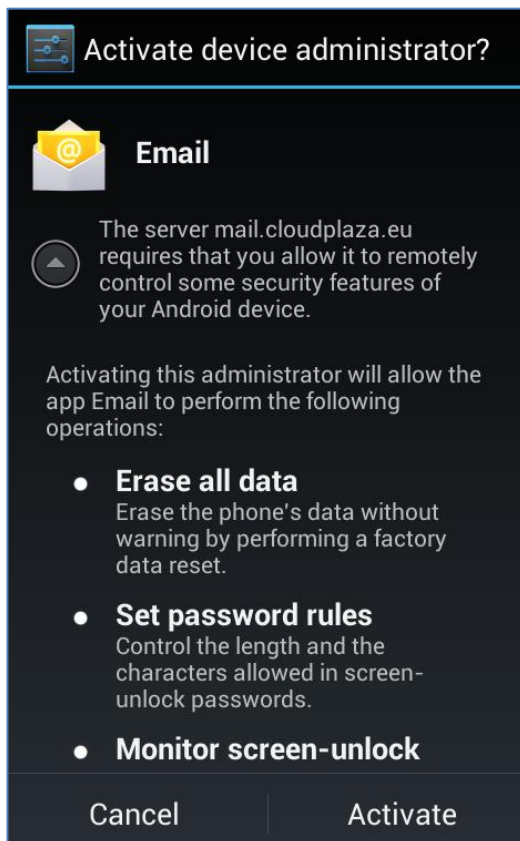
- Configure additional settings based on your preference and tap **Next**.



- Enter a name for the Exchange mailbox now set up on your phone and tap **Next**

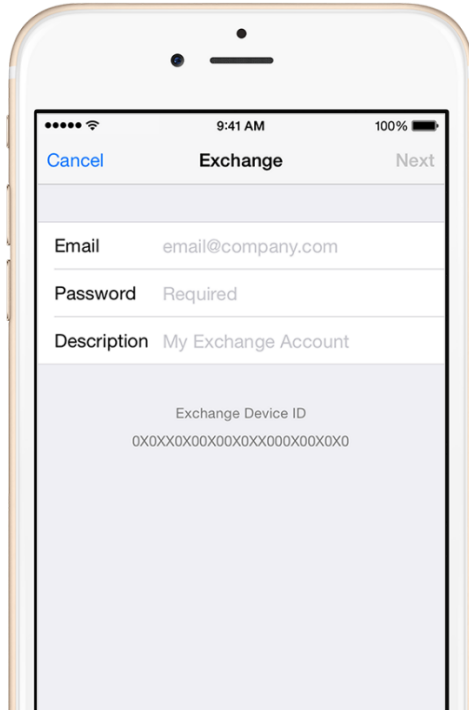


After or during this setup process, you might get the question to activate device administrator. Choose "Activate" to enable the enhanced security settings.

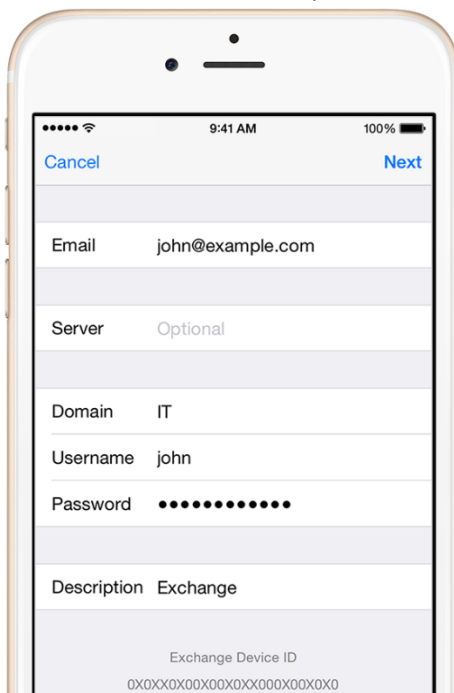


2. For iPhone:

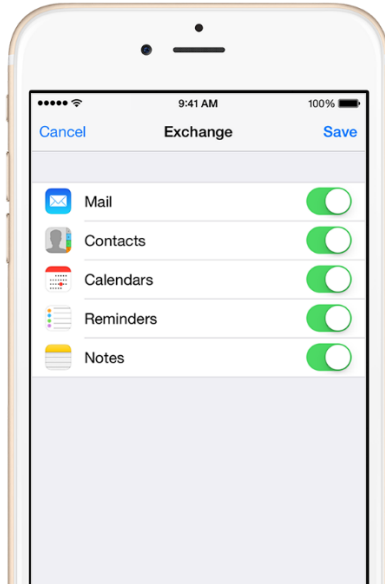
- Tap "Settings > Mail, Contacts, Calendars > Add Account > Exchange".
- Enter your Exchange email address and password. If you want to, you can also enter an account description. Tap "Next".



- Fill in server name: mail.cloudplaza.eu. Domain is not needed. Tap "Next".



- Choose which items you want to sync and tap “Save”.



To edit your Exchange settings:

Tap Settings > Mail, Contacts, Calendars, select your Exchange account, and tap Account Info. You can also go here to set up automatic out-of-office replies and change how often you want Mail to sync (the default is 7 days).